

LEASEHOLD



Apartment

# APARTMENT 8, ST. WINEFRIDES ROMILLY CRESCENT, CARDIFF

Offers In The Region

£230,000

## FEATURES

- Balcony
- Open plan style living
- Modern kitchen & en-suite
- EPC - D
- Allocated parking
- Walking distance to sought-after amenities





# 1 Bedroom Apartment located in Cardiff

Maison are proud to offer this elegant and light-filled apartment, set within the highly sought-after Pontcanna area, offering generous proportions and a refined finish throughout.

The property is accessed via a communal entrance with stairs and lift to the first floor, leading to a welcoming entrance hall featuring luxury vinyl flooring, a video intercom system and a practical airing/utility cupboard.

The open-plan kitchen, dining, and living area are stylish and functional, complete with attractive vinyl flooring, spotlighting, a Dimplex electric radiator and a well-appointed modern kitchen, ideal for both everyday living and entertaining.

The bedroom benefits from a large double-glazed window and fitted sliding mirrored wardrobes, flowing through to a sleek en-suite bathroom with contemporary fittings.

Further enhancements include sophisticated Farrow & Ball paint finishes and Hillarys electric blinds.

Call us on

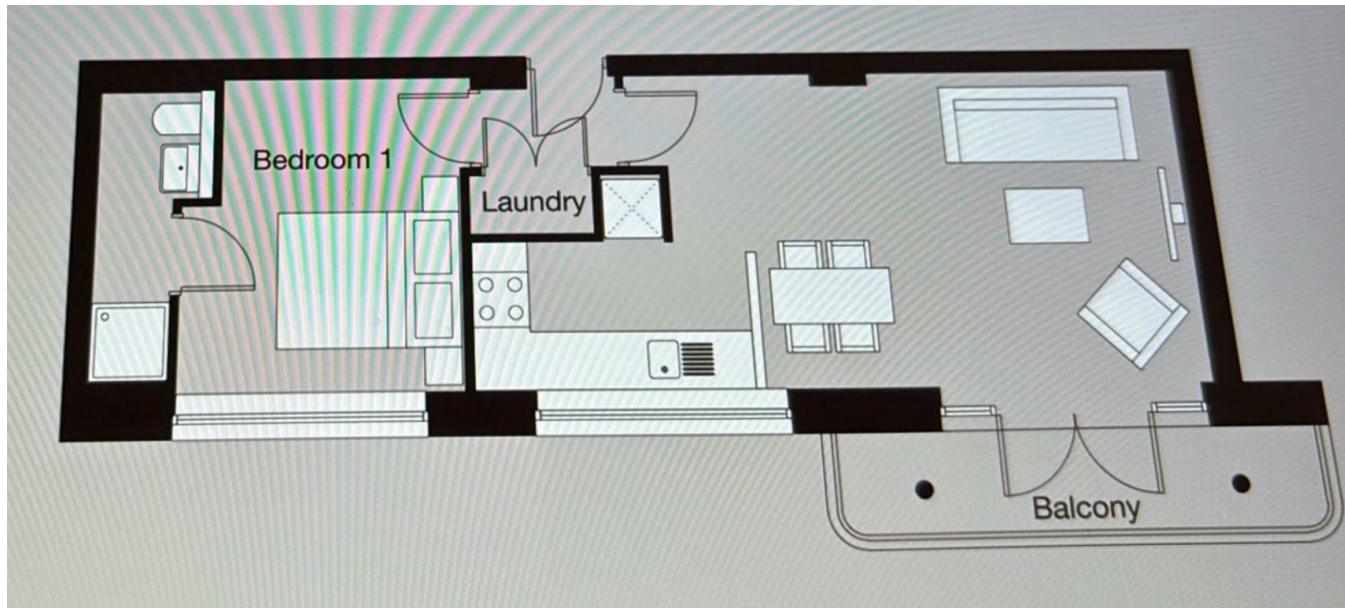
0292 009 0700

post@maison.wales

www.maison.wales

Council Tax Band

E



Energy Efficiency Rating		
	Current	Potential
Very energy efficient - lower running costs		
(92 plus) A		
(81-91) B		
(69-80) C		
(55-68) D		
(39-54) E	58	58
(21-38) F		
(1-20) G		
Not energy efficient - higher running costs		
England & Wales		EU Directive 2002/91/EC

Agents Note: Whilst every care has been taken to prepare these particulars, they are for guidance purposes only. All measurements are approximate and are for general guidance purposes only and whilst every care has been taken to ensure their accuracy, they should not be relied upon and potential buyers are advised to recheck the measurements.